

## Modular Cooking Range Line 900XP One Well Gas Fryer 15 liter

ITEM # \_\_\_\_\_

MODEL # \_\_\_\_\_

NAME # \_\_\_\_\_

SIS # \_\_\_\_\_

AIA # \_\_\_\_\_


**391077 (E9FRGD1GF0)**

15-lt gas Fryer with 1 "V" shaped well (external burners), 1 basket and lid included

### Short Form Specification

#### Item No. \_\_\_\_\_

High efficiency 14 kW burners in stainless steel. Suitable for natural gas or LPG. Deep drawn V-shaped well. Oil drains through a tap into a container under the well. Height adjustable feet in stainless steel. Exterior panels in stainless steel. Worktop in 20/10, stainless steel. Right-angled side edges eliminate gaps and possible dirt traps between units.

### Main Features

- Deep drawn V-Shaped well.
- High efficiency 14 kW burners in stainless steel with flame failure device attached to the outside of the well.
- Thermostatic regulation of oil temperature up to a maximum of 190 °C.
- Flame failure device on each burner.
- Overheat protection thermostat as standard on all units.
- Oil drains through a tap into a drainage container positioned under the well.
- All major compartments located in front of unit for ease of maintenance.
- Piezo spark ignition for added safety.
- The special design of the control knob system guarantees against water infiltration.
- Unit delivered with four 50 mm legs in stainless steel as standard (all round Stainless steel kick plates as option).
- Supplied as standard with 1 basket and 1 right side door for cupboard.
- Optional portable oil quality monitoring tool (code 9B8081) for efficient oil management.

### Construction

- Unit is 930 mm deep to give a larger working surface area.
- All exterior panels in Stainless Steel with Scotch Brite finishing.
- Model has right-angled side edges to allow flush fitting joints between units, eliminating gaps and possible dirt traps.
- Interior of well with rounded corners for ease of cleaning.
- IPX5 water resistance certification.

### Included Accessories

- 1 of Door for open base cupboard PNC 206350
- 1 of 1 full size basket for 14/15lt fryers PNC 921691

### Optional Accessories

- Junction sealing kit PNC 206086 ☐
- Draught diverter, 120 mm diameter PNC 206126 ☐
- Matching ring for flue condenser, 120 mm diameter PNC 206127 ☐
- Flanged feet kit PNC 206136 ☐
- Frontal kicking strip for concrete installation, 400mm PNC 206147 ☐
- Frontal kicking strip for concrete installation, 800mm PNC 206148 ☐

APPROVAL: \_\_\_\_\_

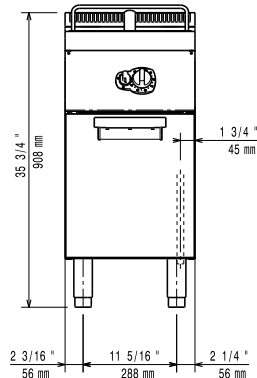
|  |            |                          |                                    |            |                          |
|--|------------|--------------------------|------------------------------------|------------|--------------------------|
| • Frontal kicking strip for concrete installation, 1000mm                        | PNC 206150 | <input type="checkbox"/> | • Pressure regulator for gas units | PNC 927225 | <input type="checkbox"/> |
| • Frontal kicking strip for concrete installation, 1200mm                        | PNC 206151 | <input type="checkbox"/> |                                    |            |                          |
| • Frontal kicking strip for concrete installation, 1600mm                        | PNC 206152 | <input type="checkbox"/> |                                    |            |                          |
| • Pair of side kicking strips for concrete installation                          | PNC 206157 | <input type="checkbox"/> |                                    |            |                          |
| • Frontal kicking strip, 400mm (not for refr-freezer base)                       | PNC 206175 | <input type="checkbox"/> |                                    |            |                          |
| • Frontal kicking strip, 800mm (not for refr-freezer base)                       | PNC 206176 | <input type="checkbox"/> |                                    |            |                          |
| • Frontal kicking strip, 1000mm (not for refr-freezer base)                      | PNC 206177 | <input type="checkbox"/> |                                    |            |                          |
| • Frontal kicking strip, 1200mm (not for refr-freezer base)                      | PNC 206178 | <input type="checkbox"/> |                                    |            |                          |
| • Frontal kicking strip, 1600mm (not for refr-freezer base)                      | PNC 206179 | <input type="checkbox"/> |                                    |            |                          |
| • Pair of side kicking strips (not for refr-freezer base)                        | PNC 206180 | <input type="checkbox"/> |                                    |            |                          |
| • 2 panels for service duct for single installation                              | PNC 206181 | <input type="checkbox"/> |                                    |            |                          |
| • 2 panels for service duct for back to back installation                        | PNC 206202 | <input type="checkbox"/> |                                    |            |                          |
| • Kit 4 feet for concrete installation (not for 900 line free standing grill)    | PNC 206210 | <input type="checkbox"/> |                                    |            |                          |
| • Sediment tray for 15lt fryers  | PNC 206235 | <input type="checkbox"/> |                                    |            |                          |
| • Oil drain pipe for 15lt free standing fryer                                    | PNC 206301 | <input type="checkbox"/> |                                    |            |                          |
| • Chimney upstand, 400mm   | PNC 206303 | <input type="checkbox"/> |                                    |            |                          |
| • Back handrail 800 mm   | PNC 206308 | <input type="checkbox"/> |                                    |            |                          |
| • Back handrail 1200 mm  | PNC 206309 | <input type="checkbox"/> |                                    |            |                          |
| • Flue condenser for 1/2 module, 120 mm diameter                                 | PNC 206310 | <input type="checkbox"/> |                                    |            |                          |
| • Door for open base cupboard  | PNC 206350 | <input type="checkbox"/> |                                    |            |                          |
| • Base support for feet or wheels - 400mm (700/900)                              | PNC 206366 | <input type="checkbox"/> |                                    |            |                          |
| • Base support for feet or wheels - 800mm (700/900)                              | PNC 206367 | <input type="checkbox"/> |                                    |            |                          |
| • Base support for feet or wheels - 1200mm (700/900)                             | PNC 206368 | <input type="checkbox"/> |                                    |            |                          |
| • Base support for feet or wheels - 1600mm (700/900)                             | PNC 206369 | <input type="checkbox"/> |                                    |            |                          |
| • Base support for feet or wheels - 2000mm (700/900)                             | PNC 206370 | <input type="checkbox"/> |                                    |            |                          |
| • Rear paneling - 600mm (700/900XP)  | PNC 206373 | <input type="checkbox"/> |                                    |            |                          |
| • Rear paneling - 800mm (700/900)  | PNC 206374 | <input type="checkbox"/> |                                    |            |                          |
| • Rear paneling - 1000mm (700/900)   | PNC 206375 | <input type="checkbox"/> |                                    |            |                          |
| • Rear paneling - 1200mm (700/900)   | PNC 206376 | <input type="checkbox"/> |                                    |            |                          |
| • Chimney grid net, 400mm (700XP/900)  | PNC 206400 | <input type="checkbox"/> |                                    |            |                          |
| • Base support for feet or wheels - 600mm (700/900)                              | PNC 206431 | <input type="checkbox"/> |                                    |            |                          |
| • Kit G.25.3 (NI) gas nozzles for 900 fryers                                     | PNC 206467 | <input type="checkbox"/> |                                    |            |                          |
| • 2 side covering panels for free standing appliances                            | PNC 216134 | <input type="checkbox"/> |                                    |            |                          |
| • 1 full size basket for 14/15lt fryers  | PNC 921691 | <input type="checkbox"/> |                                    |            |                          |
| • 2 half size baskets for 14/15lt fryers   | PNC 921692 | <input type="checkbox"/> |                                    |            |                          |
| • Filter for fryer oil collection basin for 7lt, 14lt, 15lt free standing fryers | PNC 921693 | <input type="checkbox"/> |                                    |            |                          |
| • Unclogging rod for 15lt fryers drainage pipe                                   | PNC 921695 | <input type="checkbox"/> |                                    |            |                          |
| • Deflector for floured products for 15lt fryers                                 | PNC 921696 | <input type="checkbox"/> |                                    |            |                          |



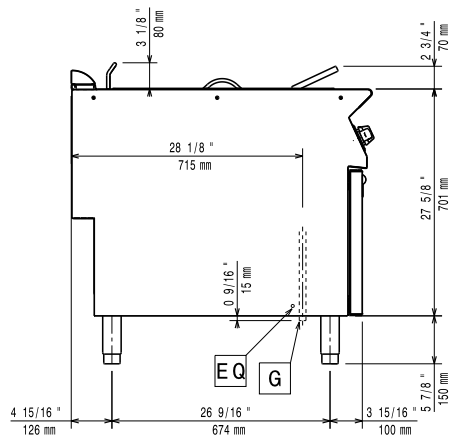
**Electrolux**  
PROFESSIONAL

## Modular Cooking Range Line 900XP One Well Gas Fryer 15 liter

Front

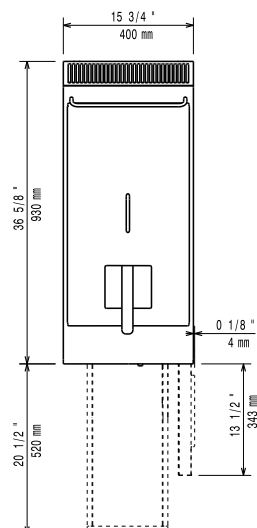


Side



EQ = Equipotential screw  
G = Gas connection

Top



### Gas

|                        |                          |
|------------------------|--------------------------|
| Gas Power:             | 14 kW                    |
| Standard gas delivery: | Natural Gas G20 (20mbar) |
| Gas Type Option:       | LPG                      |
| Gas Inlet:             | 1/2"                     |

### Key Information:

|                                  |                        |
|----------------------------------|------------------------|
| Usable well dimensions (width):  | 240 mm                 |
| Usable well dimensions (height): | 505 mm                 |
| Usable well dimensions (depth):  | 380 mm                 |
| Well capacity:                   | 13 lt MIN; 15 lt MAX   |
| Thermostat Range:                | 120 °C MIN; 190 °C MAX |
| Net weight:                      | 50 kg                  |
| Shipping weight:                 | 65 kg                  |
| Shipping height:                 | 1080 mm                |
| Shipping width:                  | 460 mm                 |
| Shipping depth:                  | 1020 mm                |
| Shipping volume:                 | 0.51 m <sup>3</sup>    |
| Certification group:             | N9FG1                  |

If appliance is set up or next to or against temperature sensitive furniture or similar, a safety gap of approximately 150 mm should be maintained or some form of heat insulation fitted.



Modular Cooking Range Line  
900XP One Well Gas Fryer 15 liter

The company reserves the right to make modifications to the products without prior notice. All information correct at time of printing.

2026.01.02